



Building
the Future,
Powering
Progress

KSR Infracon Pvt. Ltd.

K. Seshagiri Rao & Co.

Sterling Stonex Pvt. Ltd.

KSR Marine Services Pvt. Ltd.

www.ksrgroup.in



CONSTRUCTION

HANDLING SOME OF THE KEY CHALLENGES OF OUR ERA

CONSTRUCTION

KSR Infracon Pvt. Ltd., established in 2004, is a critical player in overburden excavation, hydro power projects, dams, tunnels, canals, and high-rise tower construction, backed by over 20 years of expertise. The company has executed large-scale excavation projects involving millions of cubic meters of earthwork, ensuring the foundation of vital infrastructure. With a solid financial reputation and the trust of major banks and financial institutions, KSRIPL operates with precision, efficiency, and an unwavering commitment to safety and quality. Its systematic and professional execution makes it an indispensable force in the industry, shaping the future of infrastructure development.



DREDGING

DREDGING

KSR Marine is a critical force in capital and maintenance dredging, providing innovative and precise solutions with highly skilled manpower and cutting-edge instrumentation. The company plays a pivotal role in dredging millions of cubic meters, ensuring the development and sustainability of vital waterways, safeguarding fragile shorelines, reclaiming land for essential infrastructure, and executing complex construction projects. With an unwavering commitment to safety, quality, and timely execution, KSR Marine stands as an indispensable partner in shaping and protecting our coastal and maritime environments.



SLAG HANDLING

SLAG HANDLING

K. Seshagiri Rao & Co. plays a crucial role in material handling, excavation, and the recovery of slag, scrap, and skull in steel industries. The company is entrusted with highly critical operations, including the removal of hot slag and the recovery of valuable materials in extreme industrial conditions. With expertise in handling heavy machinery and executing complex excavation contracts, the firm ensures seamless execution of vital processes essential to steel plant operations.



HIRING OF HEAVY EQUIPMENT

HIRING OF HEAVY EQUIPMENT

The fleet of machinery is continuously upgraded and expanded, now boasting an impressive 125 machines available for hire. The firm offers a diverse range of equipment, including heavy cranes, excavators, dumpers, earthmoving machinery, and compressors of various sizes and capacities, ensuring reliable solutions for a wide range of project needs.

GRANITE MINING

Sterling Stonex Pvt. Ltd. (100% E.O.U.), established in 1995, is the granite division of the group. The company holds lease rights over 75 acres of mining area across multiple locations for its quarrying operations. It extracts high-quality raw granite blocks, which are exported worldwide, with a portion utilized for captive production of monuments and memorials for export.



GRANITE MINING

BEST AT PEOPLE

Over the years, KSR Group has established itself as a global powerhouse in infrastructure support services, excelling in dredging, construction, and mining. Our projects are not just large in scale but demand unparalleled precision, complexity, and engineering mastery—challenges we embrace with expertise and innovation.

While we operate with a cutting-edge fleet and advanced infrastructure, our greatest asset is our people. With a team of 2,000 highly skilled professionals—engineers, machine operators, IT analysts, captains, construction workers, and even cooks—we bring unmatched dedication and capability to every project. Whether on our vessels, at job sites, or in offices, they are the backbone of our success.

At KSR, we don't just invest in machinery; we invest in people. Their ingenuity and determination redefine the limits of possibility, proving that with the right team, no challenge is too great.



GROUP FINANCIALS

Performance Dashboard 2024-25

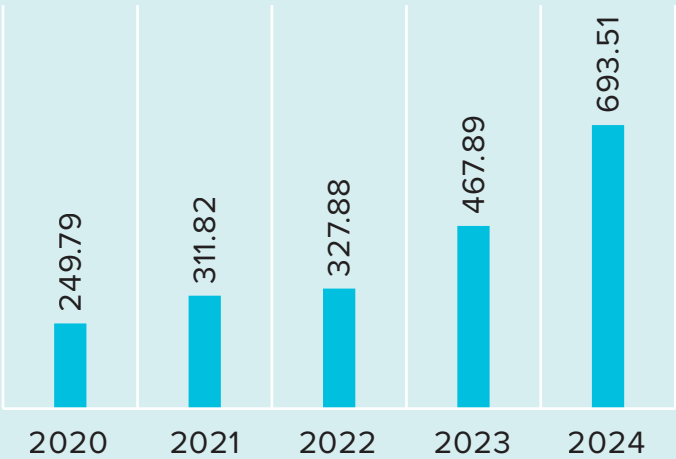
Our order book continues to grow at a staggering pace, driven by a surge in new contracts, the addition of cutting-edge vessels, fleet expansions, newly acquired mining rights, advanced granite processing factories, and significant tender victories. This rapid growth underscores our relentless pursuit of excellence and industry leadership.

Our revenue is experiencing a staggering growth rate, driven by the successful execution of large-scale projects with precision, efficiency, and engineering excellence.

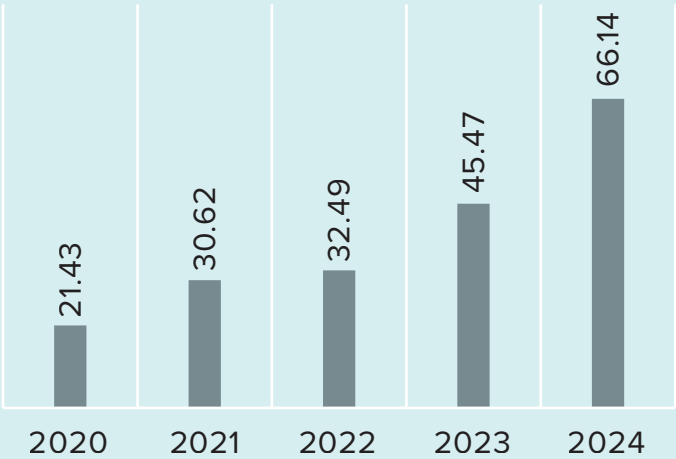
We are witnessing a strong EBIDTA growth rate across the industries our group operates in, driven by efficient project execution, strategic cost management, and high-margin contracts. This financial momentum underscores our operational excellence and reinforces our leadership in the sector.



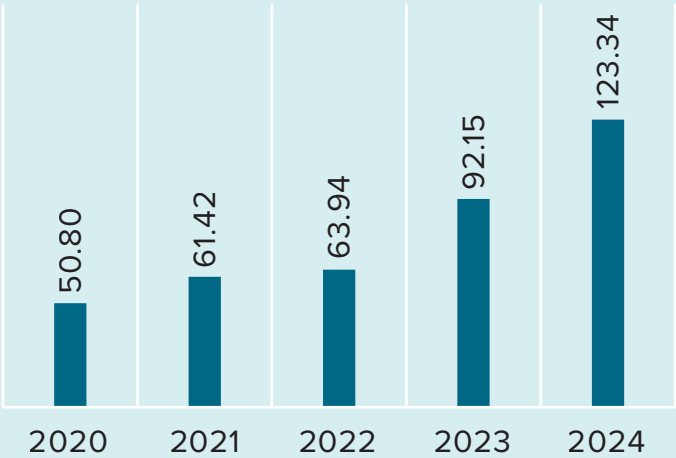
GROSS RECEIPTS



PBT



EBIDTA



* Value in Crores INR

KEY MANAGEMENT

All the core promoters are ably supported by thorough professionals, wellexperienced and skilled personnel at all production, marketing and administrative levels. The promoters are high net worth individuals and dynamic businessmen.

MR. K. VENKATESWARA RAO

A commerce graduate, is the Managing Director/Partner of KSR Group companies/firms. He possesses about three decades of invaluable project and management experience with immense business acumen. He has been successfully running the businesses of the Group for several years. His vision for continuous growth plans kept the Group dynamic and vibrant.

MR. K. SRINIVAS RAO

An engineering graduate is the Executive Director/working partner of the Group companies/firms. He has vast hands on experience in project implementation and mining operations of the Group companies. Among the major projects that he has successfully handled are the hydropower projects at Koldam and Uhl in Himachal Pradesh and granite mining in Andhra Pradesh and Tamilnadu.

MR. K. TIRUMALA RAO

An engineering graduate is Whole-time Director/ Partner in KSR Group companies/firms. He is the over all in charge of 100% EOU granite processing operations of the Group at Nalgonda District of Andhra Pradesh. He possesses extensive knowledge and experience in processing granite monuments/memorials and marketing them.



KSR Marine Services

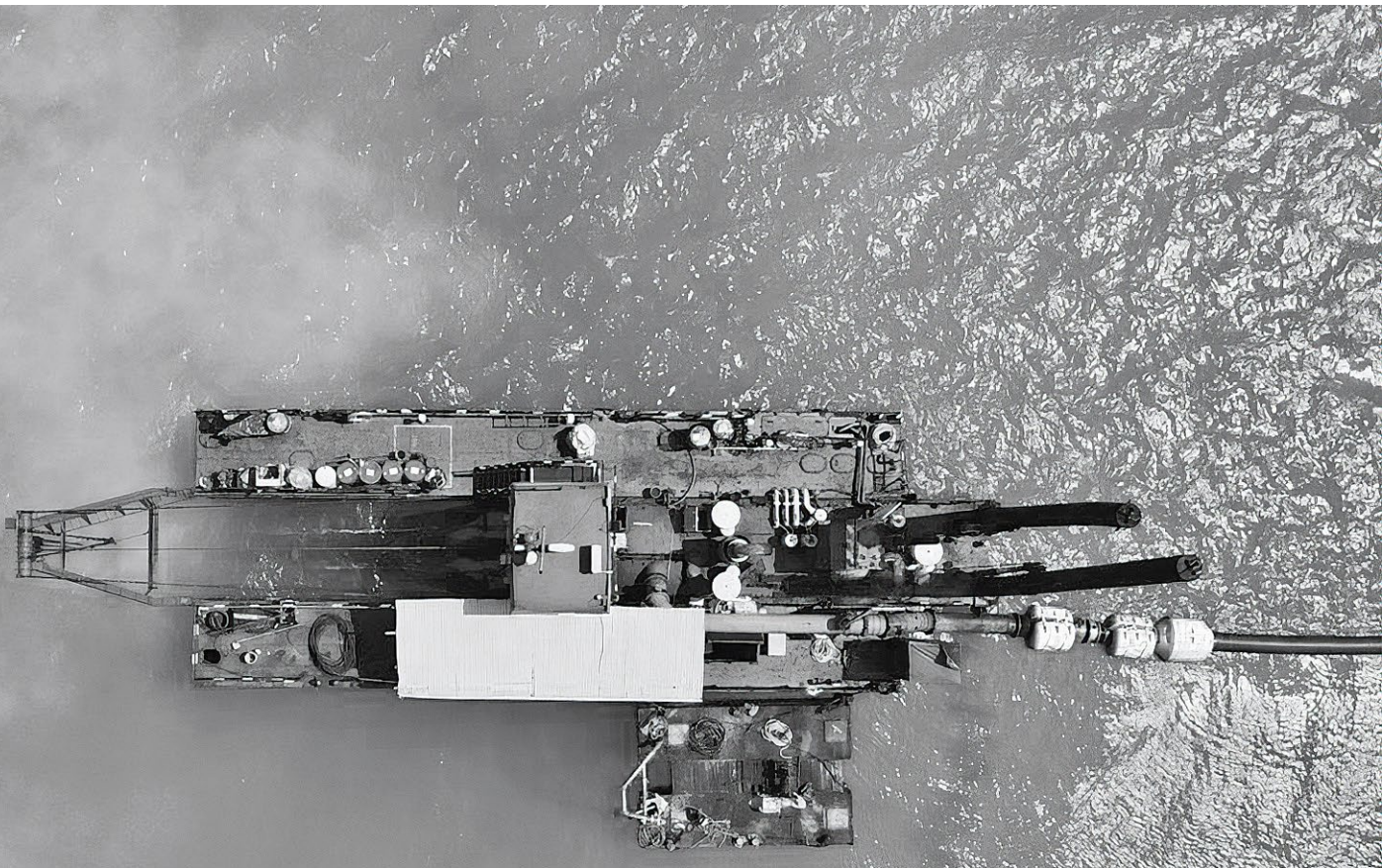


ABOUT OUR JOURNEY SO FAR

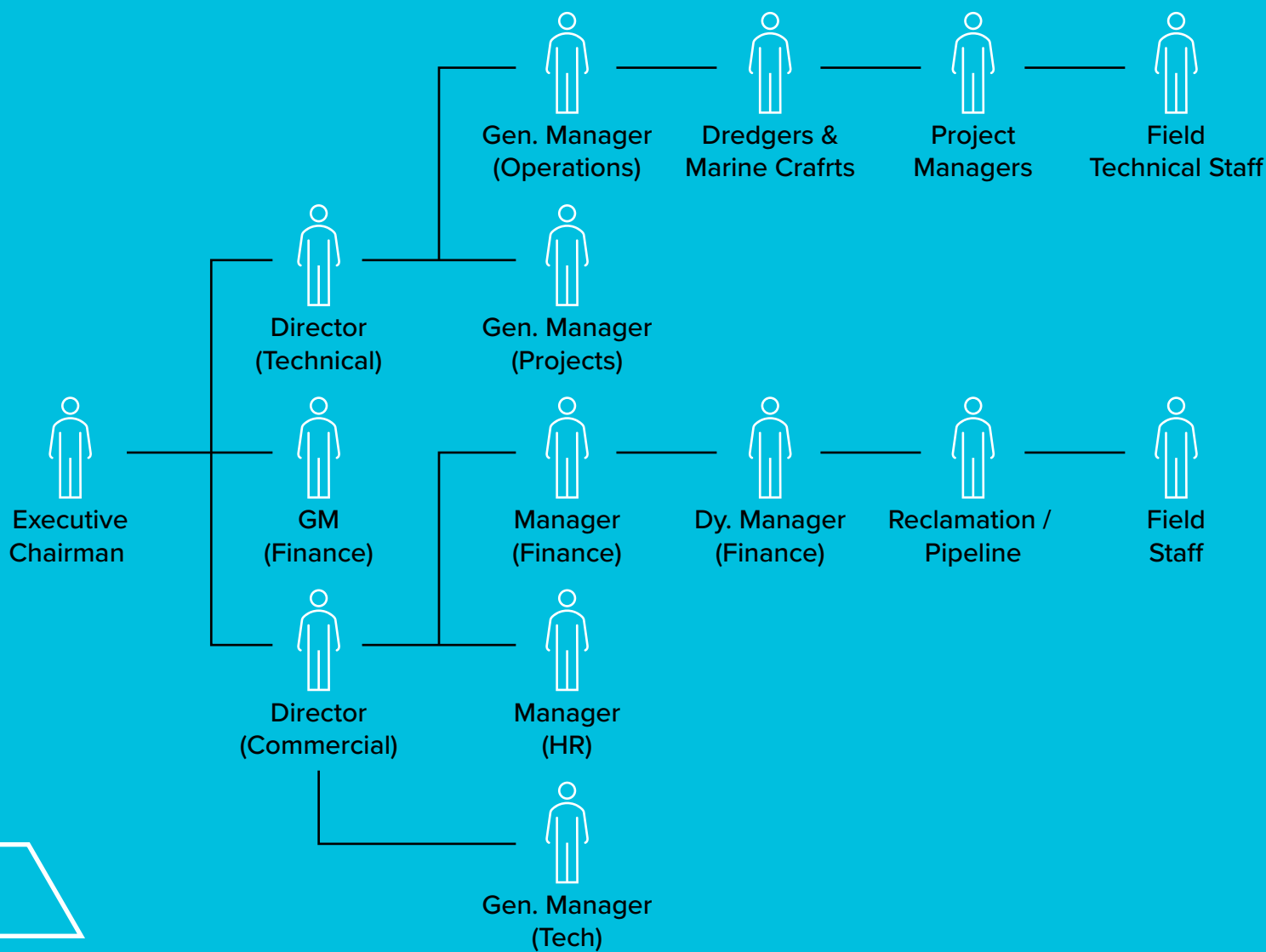
KSR Marine Services Private Limited stands as India's premier dredging powerhouse, headquartered in Hyderabad and serving as a key pillar of the KSR Group of Companies. Established in 2007, the company has built an unrivaled reputation in Capital & Maintenance Dredging.

KSR Marine has a proven track record in large-scale dredging and reclamation projects across India and the Maldives. Expanding its international presence, the company has now established regional offices in Bangladesh and Myanmar, reinforcing its vision of becoming a global leader in dredging operations. With a formidable fleet of nine high-performance cutter suction dredgers and a full suite of associated equipment, KSR Marine is capable of executing dredging projects of any magnitude—ensuring seamless completion within defined and agreed timelines. Our elite team of skilled professionals, guided by advanced engineering principles, upholds a relentless commitment to excellence, delivering projects on time, every time.

KSR Marine was founded with a clear mission: to redefine industry standards by providing exceptional dredging and land reclamation solutions that prioritize customer needs and value-driven services. Operating with its own fleet of dredgers, the company guarantees precision, reliability, and cost efficiency—backed by a relentless pursuit of engineering excellence. As a testament to its unwavering focus on quality, environmental responsibility, and workplace safety, KSR Marine is proudly certified with: ISO 9001:2015 – Quality Management System, ISO 14001:2015 – Environmental Management System and ISO 45001:2018 – Occupational Health & Safety.



CORPORATE SYNERGY MODEL



CORE ACTIVITIES



CAPITAL DREDGING

KSR Marine Services specializes in capital dredging, playing a pivotal role in deepening and expanding waterways, ports, and harbors to accommodate larger vessels and enhance maritime trade. With a fleet of advanced Cutter Suction Dredgers and a highly skilled team, we execute large-scale dredging operations for new channel creation, port expansions, land reclamation, and coastal protection.



OFFSHORE PIPELINE TRENCHING

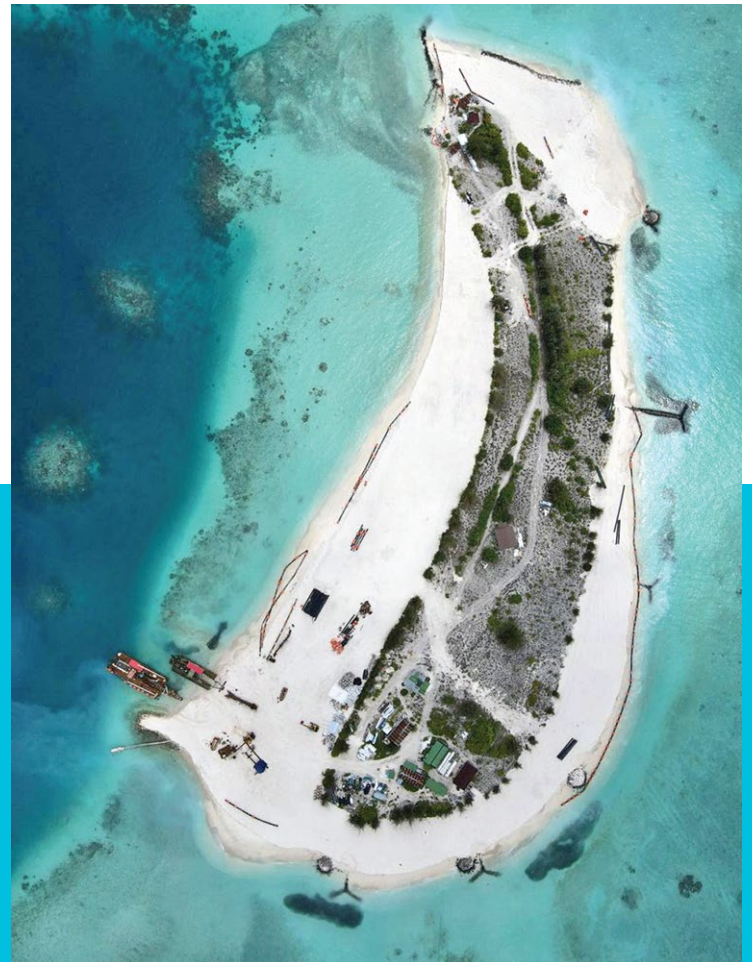
KSR Marine Services is a key player in offshore pipeline trenching, a vital operation for the installation and protection of subsea pipelines in oil, gas, and utility sectors. Utilizing cutting-edge dredging and trenching technology, we create precisely engineered seabed trenches, ensuring pipelines remain safeguarded against hydrodynamic forces, seabed movement, and environmental challenges.

MAINTENANCE DREDGING

KSR Marine Services excels in maintenance dredging, ensuring that existing waterways, ports, and harbors remain navigable by removing accumulated sediment, silt, and debris.

RIVER DREDGING FOR RIVER NAVIGATIONAL CHANNELS

We are key players in river dredging, ensuring the efficient maintenance and deepening of navigational channels for uninterrupted vessel movement. Using advanced Cutter Suction Dredgers, we remove sediment buildup, silt, and debris to maintain safe and optimized waterways.



CORE ACTIVITIES

LAND RECLAMATION/ LAND DEVELOPMENT

KSR Marine Services is a pioneer in land reclamation and land development, transforming waterlogged and unproductive areas into valuable, usable land for infrastructure, industrial zones, urban expansion, and resort construction. Using advanced dredging techniques, we reclaim land by depositing dredged materials, stabilizing shorelines, and creating new land masses to support ports, coastal developments, and luxury resort projects.



SAND MINING

KSR Marine Services is also involved in sand mining, providing high-quality dredging solutions for the extraction of sand from rivers, seabeds, and coastal areas.



IRRIGATION CANAL DREDGING

KSR Marine Services is a trusted expert in irrigation canal dredging, ensuring uninterrupted water flow for agriculture, drinking water supply, and flood management.



INTAKE AND OUTFALL CHANNELS

We are trusted expert in the dredging and construction of intake and outfall channels, ensuring the efficient flow of water for power plants, desalination facilities, industrial cooling systems, and wastewater management.

DESILTATION OF LAKES, PONDS AND BARRAGES

The company is specialist in the desiltation of lakes, ponds, and barrages, ensuring the restoration, conservation, and optimal water retention of these critical water bodies.

ONE OF THE MOST TECHNOLOGICALLY ADVANCE FLEET

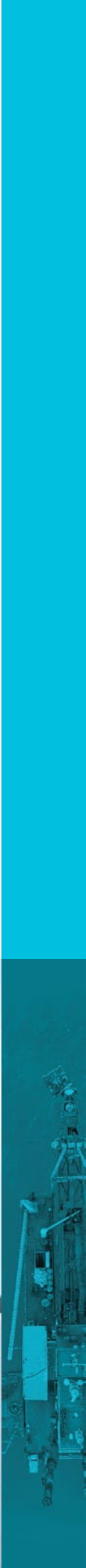
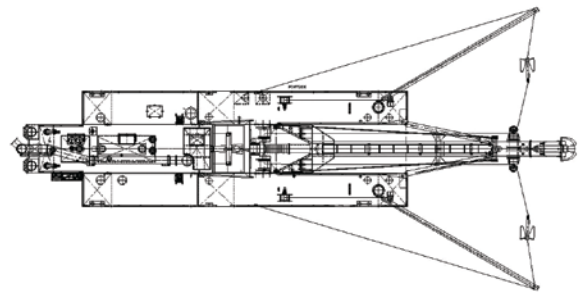
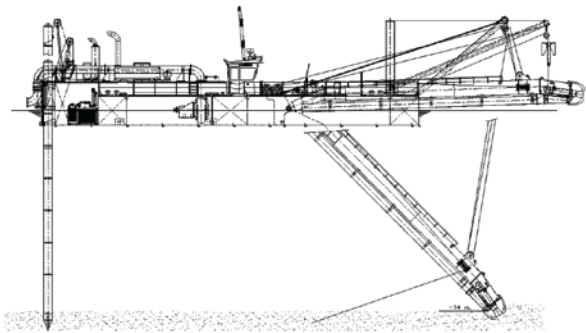
Fueled by ongoing investments

KSR Marine Services operates one of the most technologically advanced fleets in the industry, equipped with state-of-the-art Cutter Suction Dredgers, precision dredging systems, and real-time monitoring technology. With an annual dredging capacity of 17.3 million cubic meters, we are one of the largest fleet owners and operators in India, enabling us to execute large-scale capital and maintenance dredging, land reclamation, offshore trenching, and waterway development projects with unmatched efficiency and precision. Our modern fleet ensures high-precision dredging, minimal environmental impact, and optimized project execution, making KSR Marine a trusted leader in marine infrastructure development.



CUTTER SUCTION DREDGER KSR-I (DAMEN 500)

Place of Built	Damen Shipyard, Netherlands
Year of Built	2011
Length	38.50 Mts
Width	7.95 Mts
Draft	1.15 Mts
Depth of Dredging	16.00 Mts
Discharge Pipe Diameter	500 MM
Mixture Capacity	4000 Cum/Hr
Total Installed Power	1299 KW
Dredge Pump Engine	Caterpillar (Cat 3512 B-TA) 925 KW/1280 HP
Cutter Power	180 KW
Cutter Diameter	1625 MM
Spuds Height	19.00 Mtrs
Annual Capacity	18 Lakhs CBM



CUTTER SUCTION DREDGER KSR-II (CSD 750)

Place of Built	Ohyama Ship Building Company, Korea
Year of Built	1999
Length	75.70 Mts
Width	15.50 Mts
Depth	24.0 Mts
Draft (Loaded)	2.20 Mts
Depth of Dredging	25.00 Mts
Discharge Pipe Diameter	750 MM
Dredge Mixture Capacity	6000 Cum/Hr
Total Installed Power	2500 KW
Dredge Pump Engine	Mitsubishi; 18KU30-V-TYPE
Power	5064.28 KW
Cutter Power	750 KW
Cutter Diameter	2800 MM
Spud Height	32 Mtrs
Dredge Pump	Centrifugal; Model-SSVL-30
GRT	1032 MT
NRT	309 TMT
Annual Capacity	25 Lakhs C.B.M.



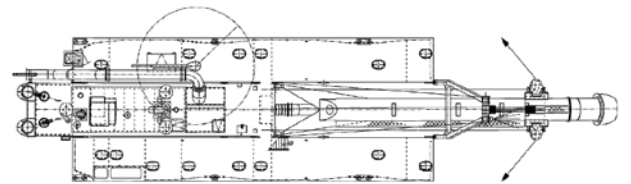
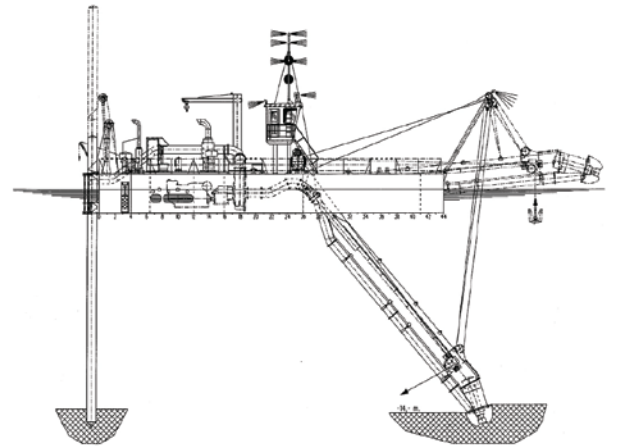
CUTTER SUCTION DREDGER KSR-IV (CSD 250)

Place of Built	Matprop Technical Services, Cochin
Year of Built	2012
Length	15.85 Mts
Width	4.58 Mts
Draft	0.75 Mts
Depth of Dredging	6.00 Mts
Discharge Pipe Diameter	250 MM
Mixture Capacity Dredge	900 Cum/Hr (180 - 200 Cum Solids)
Dredge Pump Engine	CAT 3406 (306 KW/410 HP)
Cutter Power	30 KW
Cutter Diameter	1100 MM
Annual Capacity	5 Lakhs C.B.M.



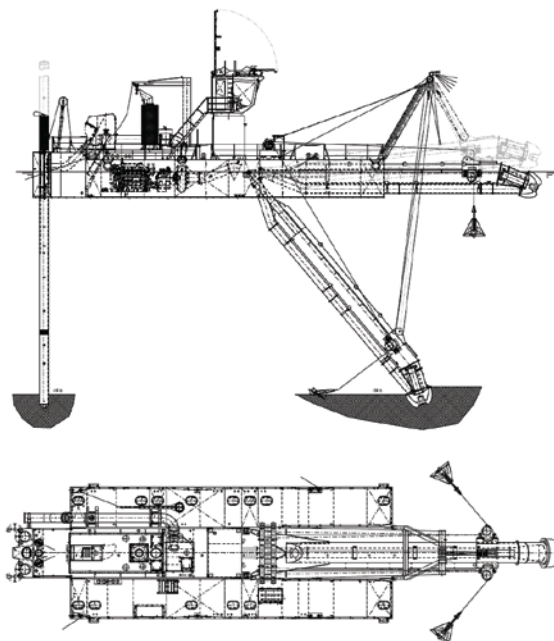
CUTTER SUCTION DREDGER KSR-V (IHC BEAVER - 1600)

Place of Built	IHC Holland, Netherlands
Year of Built	2014
Length overall	33.20 Mts.
Width	7.95 Mts.
Draft	1.50 Mts.
Depth of Dredging	14.00 Mts.
Discharge Pipeline	500 MM
Mixture Capacity	4000 Cum/Hr
Total Installed Power	1299 KW
Dredge Pump Engine	Caterpillar 3512 B
Cutter Power	170 KW
Cutter Diameter	1455 MM
Spuds Height	18.50 Mtrs.
Annual Capacity	18 Lakhs C.B.M.



CUTTER SUCTION DREDGER KSR-VI (IHC BEAVER - 50)

Place of Built	IHC MERWEDE, Netherlands
Year of Built	2014
Length	32.3 Mts.
Width	7.87 Mts.
Draft	1.45 Mts.
Depth of Dredging	14.00 Mts.
Discharge Pipeline	500 MM
Mixture Capacity	4000 Cum/Hr
Total Installed Power	1350 KW
Dredge Pump Engine	Caterpillar 3512 C
Cutter Power	170 KW
Cutter Diameter	1455 MM
Spuds Height	19.00 Mtrs.
Annual Capacity	18 Lakhs C.B.M.



CUTTER SUCTION DREDGER KSR-VII (IHC BEAVER - 5016)

Place of Built IHC HOLLAND, Netherlands

Year of Built 2008

Length 37.7 Mts.

Width 9.50 Mts.

Draft 1.50 Mts.

Depth of Dredging 16.00 Mts.

Discharge Pipeline 500 MM

Mixture Capacity 4000 Cum/Hr

Total Installed Power 1115 KW

Dredge Pump Engine Caterpillar 3508B

Cutter Power 170 KW

Cutter Diameter 1455 MM

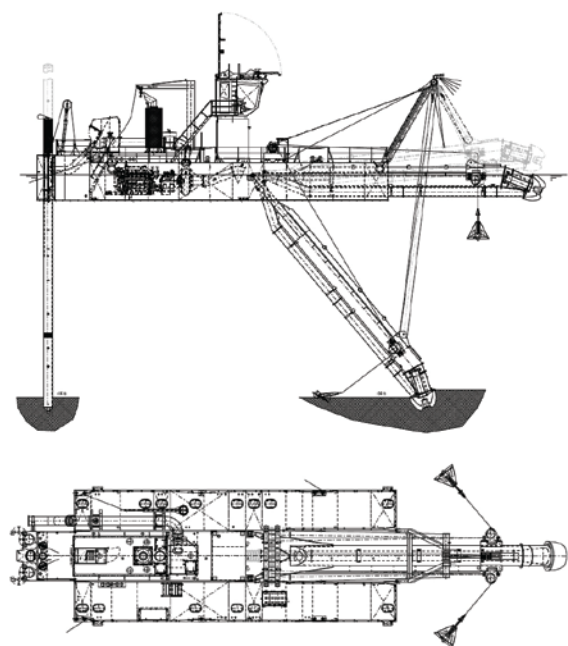
Spuds Height 20.65 Mtrs.

Annual Capacity 18 Lakhs C.B.M.



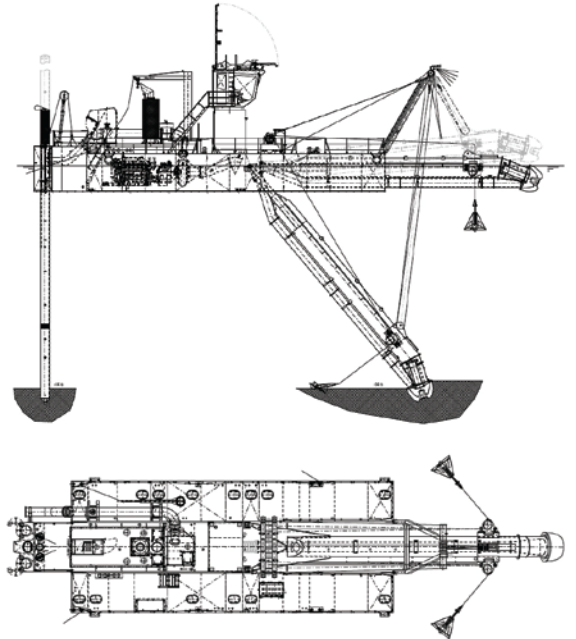
CUTTER SUCTION DREDGER KSR-VIII (IHC BEAVER - 5014C)

Place of Built	IHC HOLLAND, Netherlands
Year of Built	2005
Length	35.10 Mts.
Width	9.50 Mts.
Draft	1.50 Mtrs
Depth of Dredging	14.00 Mts.
Discharge Pipeline	500 MM
Mixture Capacity	4000 Cum/Hr
Total Installed Power	1091 KW
Dredge Pump Engine	Caterpillar 3508B
Cutter Power	170 KW
Cutter Diameter	1455 MM
Spuds Height	18.60 Mtrs.
Annual Capacity	18 Lakhs C.B.M.



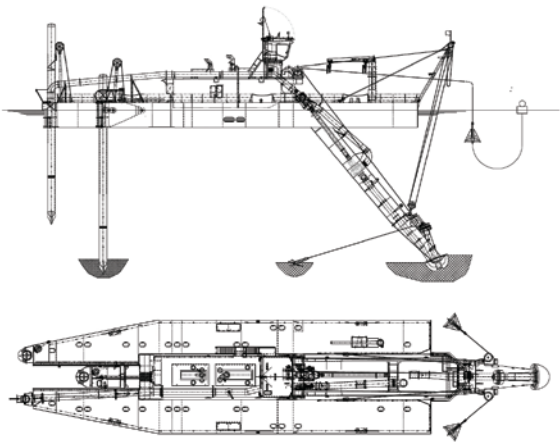
CUTTER SUCTION DREDGER KSR-IX (IHC BEAVER - 5014C)

Place of Built	IHC HOLLAND, Netherlands
Year of Built	2007
Length	35.10 Mts.
Width	9.50 Mts.
Draft	1.50 Mtrs
Depth of Dredging	14.00 Mts.
Discharge Pipeline	500 MM
Mixture Capacity	4000 Cum/Hr
Total Installed Power	1091 KW
Dredge Pump Engine	Caterpillar 3508B
Cutter Power	170 KW
Cutter Diameter	1455 MM
Spuds Height	18.60 Mtrs.
Annual Capacity	18 Lakhs C.B.M.



CUTTER SUCTION DREDGER KSR-X (IHC BEAVER – 65 DDSP)

Place of Built	IHC HOLLAND, Netherlands
Year of Built	2019
Length	41.76 Mts.
Width	12.44 Mts.
Draft	2.00 Mts
Depth of Dredging	18.00 Mts.
Discharge Pipeline	650 MM
Mixture Capacity	6000 Cum/Hr
Total Installed Power	2819 KW
Dredge Pump Engine	Caterpillar 3516C SCAC
Cutter Power	700 KW
Cutter Diameter	2,220 MM
Spuds Height	23.40 Mtrs.
Annual Capacity	35 Lakhs C.B.M.





PROJECTS COMPLETED IN INDIA

Project Name & Location	Name of Client	Scope of Work
Capital Dredging in front Newly Constructed Berth Nos.1 & 2 and Reclamation, Karaikal Port	MARG Group Karaikal Port (P) Ltd. Karaikal	Dredging & Land Reclamation
Capital & Maintenance Dredging and Reclamation, Karaikal Port	MARG Group Karaikal Port (P) Ltd. Karaikal	Dredging & Land Reclamation
Capital Dredging and Reclamation work at ABG Shipyard, Dahej	ABG Shipyard Ltd. Bharuch, Gujarat	Dredging & Land Reclamation
Maintenance Dredging at KRIBHCO Jetty, KRIBHCO, Hazira, Surat	KRIBHCO Surat, Gujarat	Dredging & Land Reclamation
Capital Dredging and Reclamation works at In Front Jaypee Jetty, Khari Creek, Gujarat, Jaypee Cement Corporation Ltd.	Jaypee Cement Corporation Limited, Gujarat	Dredging & Land Reclamation
Capital Dredging and Reclamation work for Sanghi Infrastructure Ltd, at Gujarat	Sanghi Infrastructure Ltd, at Gujarat	Dredging & Land Reclamation
Capital Dredging work for Outfall Channel and Reclamation work, Coastal Gujarat Power Ltd., Mundra, CGPL (Coastal Gujarat Power Limited),(TATA Group)	Coastal Gujarat Power Ltd., Mundra, Gujarat	Dredging & Land Reclamation



PROJECTS COMPLETED IN INDIA CONTD.

Project Name & Location	Name of Client	Scope of Work
Sand Extraction from River Narmada off Bhadbhut Village, Bharuch, Gujarat	Shakti Suppliers, Bharuch, Gujarat	Sand Extraction from River Narmada
De-siltation of Narendra Tank, Puri, Orissa	Pragati Marine Services Pvt., Ltd. Mumbai	De-siltation and Land Reclamation
Maintenance Dredging Works at RDMT Jetty, Dahej, Gujarat. (Reliance Industries Limited)	Reliance Industries Limited, Dahej, Gujarat.	Dredging & Land Reclamation
Dredging Services at Kochi LNG Terminal, In front Jetty of Kochi LNG Terminal, Petronet LNG Ltd, Kochi (2014-15)	Petronet LNG Ltd. Kochi, Kerala	Dredging & Land Reclamation
Dredging Services at Kochi LNG Terminal, In front Jetty of Kochi LNG Terminal, Petronet LNG Ltd, Kochi (2015)	Petronet LNG Ltd. Kochi, Kerala	Dredging & Land Reclamation
Dredging at Kodungalloor Port Basin and Channel to attain a depth of -7.0 by using Cutter Suction Dredger	Surya Associates, Kollam, Kerala (For Kerala State Development Corporation)	Dredging & Land Reclamation
Hiring of Cutter Suction Dredger KSR-II for GLL, Mundra Site. (Worked for COMACOE Pvt., Ltd.) for Pipeline Trenching for LNG Terminal	COMACOE Pvt., Ltd, Mumbai	Intake/ Outfall Channel Pipeline Trenching work





PROJECTS COMPLETED IN INDIA CONTD.

Project Name & Location	Name of Client	Scope of Work
Hiring of Inland Cutter Suction Dredger for carrying out dredging in front berths Q1,Q2,Q3 of Cochin Shipyard Ltd on daily hire basis	Dredging Corporation of India Ltd, Visakhapatnam	Dredging and side casting.
Maintenance dredging of Approach Channel and Turning Circle at Hazira Bulk Terminal, Hazira	M/s ESSAR Bulk Terminal Limited, Hazira	Maintenance Dredging
Dredging Services at Kochi LNG Terminal, In front Jetty of Kochi LNG Terminal, Petronet LNG Ltd, Kochi (2016-17)	Petronet LNG Ltd, Kochi, Kerala	Dredging & Land Reclamation
Dredging Services at Kochi LNG Terminal, In front Jetty of Kochi LNG Terminal, Petronet LNG Ltd, Kochi (2018-19)	MEKA Dredging Company (Sub-contracted to KSR Marine Services)	Dredging & Land Reclamation
Ro-Pax Terminal, Dahej, Bharuch, Gujarat	Dharti Dredging & Infrastructure Ltd, Hyderabad	Dredging & Land Reclamation
Ro-Pax Terminal, Dahej, Bharuch, Gujarat	Essar Project (India) Ltd.	Dredging & Land Reclamation
Ro-Pax Terminal, Dahej, Bharuch, Gujarat	Dharti Dredging & Infrastructure Ltd, Hyderabad	Dredging & Land Reclamation
Thalai Fishery Harbour Dredging Project, Kerala State (Comes under Supdt. Engineer, Harbour Engineering, Kozhikode, Kerala Government.	P.K.K. Constructions, Malappuram Kerala State	Capital Dredging of Thalai Fishing Harbour and disposal at deep sea by barge.





PROJECTS COMPLETED IN INDIA CONTD.

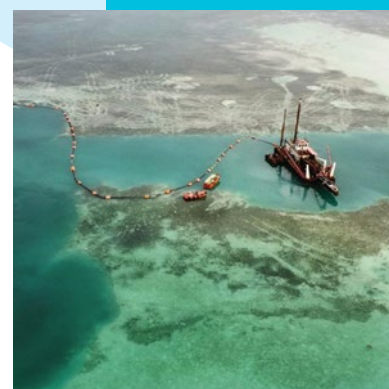
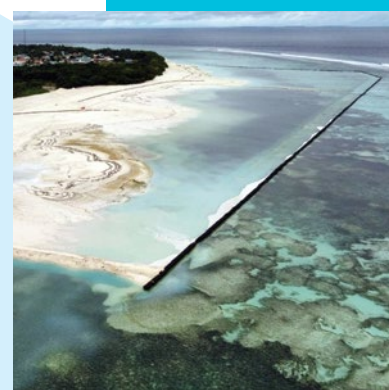
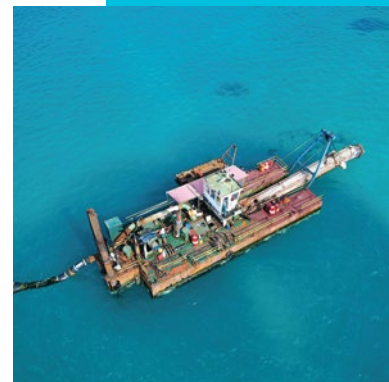
Project Name & Location	Name of Client	Scope of Work
Dredging Services at Kochi LNG Terminal, In front Jetty of Kochi LNG Terminal, Petronet LNG Ltd, Kochi (2019-2020)	Petronet LNG Ltd. Kochi, Kerala	Dredging & Land Reclamation
Dredging and Disposal of dredged spoil at designated location within L&T Kattupalli Port area	ITD Cementation India Limited	Dredging & Land Reclamation
Dredging in front of MFFK Jetty (South Side)	L&T Hydrocarbon Engineering Limited	Dredging & Land Reclamation
Capital Dredging of Inner Channel & Turning Circle at Cuddalore Port, Tamil Nadu State. M/s Sri Pathy Associates Private Limited, Erode, Tamil Nadu State	M/s Sri Pathi Associates, Tamil Nadu (Cuddalore Port, Tamil Nadu Maritime Board, Tamil Nadu)	Dredging & Reclamation
Under water Pipeline Trenching work under KG Basin Project	McDermott International Management, USA	Pipeline Trenching for ONGC Gas Pipeline
Dredging in the Entrance channel and Harbour Mouth – Pondicherry Port (Sagarmala Project)	Port Department, Government of Puducherry	Dredging & Reclamation and Beach Nourishment
Pipeline Trenching for Sea Water Intake & Outfall System for Desalination Plant, Nemelli, South Chennai, Tamil Nadu (India)	M/s Tecton Engineering & Construction (India) Private Limited, Chennai, Tamil Nadu (India)	Pipeline Trenching and side casting





PROJECTS COMPLETED IN MALDIVES

Project Name & Location	Name of Client	Scope of Work
Dredging & Land Reclamation at Muli Island, Maldives & Medhufushi Island Reclamation	EVOSUN SDN BHD	Land Development for Housing Project
Dredging & Land Reclamation at Maniyafaru Island, Maldives	EVOSUN SDN BHD	Land Development for Resort Development
Dredging & Land Reclamation at Aanugandu Faru Island, Maldives	EVOSUN (Maldives) Pvt. Ltd.	Land Development for Resort Development
Dredging & Land Reclamation at Aminigiri Faru Island	EVOSUN (Maldives) Pvt. Ltd.	Land Development for Resort Development
ADH Huruelhi Island Reclamation Project	Chang Hua Construction Pte Ltd.	Reclamation Project
Development of 3-Islands at Kassarfaru Lagoon and shore protection works around Islands with Geo-tubes. M/s Bison Maldives Private Limited, Republic of Maldives	A.B Lagoon Private Limited Republic of Maldives	Dredging & Land Development and Shore Protection works
Dredging & Reclamation works at Donmaaga Island, Kaafu Atoll, Republic of Maldives	Inspiron Private Limited, Republic of Maldives	Dredging & Land Development
Land Development at Hdh. Makunudhoo (Haa Alif Atoll) for construction of Airport	Government of Maldives	Land Development and Shore Protection works of 1.0 Million Cubic Meters. Value of work: 6.50 Million USD





ONGOING PROJECTS IN INDIA

Project Name & Location	Name of Client	Scope of Work
Construction of Fishing Harbour at Machilipatnam in Krishna District, Andhra Pradesh (India)	M/s MRKR Constructions & Industries Pvt., Ltd., Hyderabad (India) through Andhra Pradesh Maritime Board (APMB).	Construction of Break waters, Dredging & Reclamation, Construction of Jetty and Shore Facilities (EPC Contract) Value of work: INR 245 Cr.
Capital Dredging at Greenfield Port Machilipatnam, Andhra Pradesh, India	M/s Megha Engineering & Infrastructures Limited, Hyderabad (India) through Andhra Pradesh Maritime Board (APMB)	Dredging & Reclamation of 11.00 Million Cubic Meters. Value of work: INR 320 Cr.





ONGOING PROJECTS IN MALDIVES

Project Name & Location	Name of Client	Scope of Work
Dredging and reclamation of Fenfushi Island (Raa Atoll)	Mohan Mutha infrastructures Pvt. Ltd.	Land Development for resort development



HOW WE SEE THE FUTURE

KSR Marine Services is not just a dredging company; we are India's youngest and fastest-growing force in the industry, redefining marine infrastructure development with cutting-edge technology and an ever-expanding fleet. Our growth trajectory is driven by strategic expansion, continuous investment, and an unwavering commitment to excellence.

To reinforce our position as an industry leader, we are actively planning to acquiring more dredgers, including high-capacity Trailing Suction Hopper Dredgers (TSHDs) to complement our advanced fleet of Cutter Suction Dredgers (CSDs). This expansion will further enhance our ability to execute large-scale dredging, land reclamation, and offshore trenching projects with unmatched efficiency and precision.

With a vision to become a dominant force in the global dredging industry, we are aggressively exploring projects across India and neighboring countries, bringing world-class expertise to port expansions, river dredging, offshore trenching, and coastal development. Our mission is to drive sustainable marine infrastructure growth, supporting economic development and trade in the region.



A large marine vessel, likely a tugboat or barge, is shown on the water at sunset. The vessel has a white cabin and two large cranes. The sky is a mix of blue and orange, with scattered clouds. The water is dark with some ripples.

KSR MARINE SERVICES PRIVATE LIMITED

Administrative Office:

"Koneru House"
2-98/3, 10-B, Block-B,
Kakateeya Nagar, Habsiguda,
Hyderabad - 500 007
Telangana, INDIA
Tel: +91 40 2715 3096 / 2715 5201
Fax: +91 40 2717 2188

Registered Office:

Flat No. 401, Ocean View Apartments,
7-5-176/1, Pandurangapuram,
Vishakhapatnam - 530003
Andhra Pradesh, INDIA

Maldives Office:

H. Fairlin, Apt. 9A, Male.

Email:

ksrmarine@ksrgroup.in

Website:

www.ksrmarine.com